

## Rab39

**Catalog Number:** 21082

**Gene Symbol:** RAB39

**Description:** Anti-Rab39 Rabbit Polyclonal Antibody

**Background:** Ras-related protein Rab39 is a Golgi-associated protein involved in endocytosis.

**Immunogen:** A synthetic peptide from the internal region of human Rab39 protein

**Tested applications:** ELISA, WB, IHC, IP

**Recommended Dilutions:**

ELISA 1:100-1:5000

WB 1:100-1:1000

IHC 1:100-1:1000

**Concentration:** 0.2 mg/ml

**Host:** Rabbit

**Clonality:** Polyclonal

**Purity:** Purified from serum

**Format:** Liquid

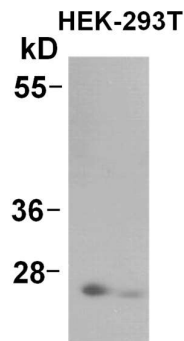
**Preservative:** No

**Constituents:** PBS (without Mg<sup>2+</sup> and Ca<sup>2+</sup>), pH 7.4, 150 mM NaCl, 50% glycerol

**Species Reactivity:** Rab39 antibody recognizes Rab39 proteins from vertebrates.

**Storage Conditions:** Store at -20°C. Avoid freeze / thaw cycles

**Western blot:**



**WB: anti-Rab39 pAb**

HEK-293T whole-cell lysate was used for Western blot with anti-Rab39 polyclonal antibody (Cat. # 21082).

FOR RESEARCH USE ONLY. NOT FOR DIAGNOSTIC APPLICATIONS